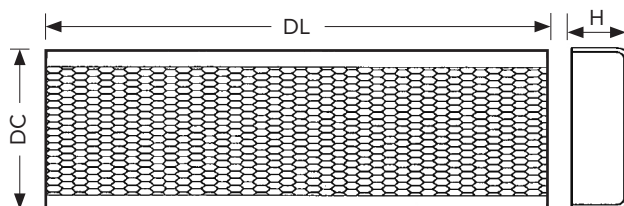
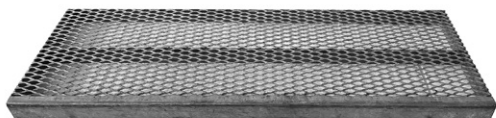


## GRADINI IN LAMIERA STIRATA

PER SCALE DI SICUREZZA



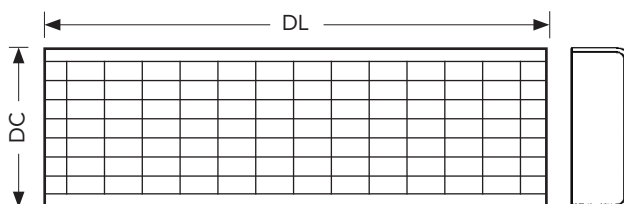
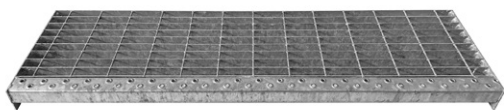
**ECO 43x10 Spessore 2 mm**

ECO			
DL mm	H mm	DC	Peso Kg/cad
500	72	200	2,7
600	72	200	3,1
700	72	200	3,4
800	72	250	4,9
900	72	250	5,3
1000	72	250	5,6

**BETA 43x10 Spessore 3 mm**

BETA			
DL mm	H mm	DC	Peso Kg/cad
1200	73	300	5,6

## GRADINI ZINCATI



DL mm	DC mm	Foratura mm	Grigliato maglia	Peso Kg/cad
600	267	115	25x76 25x2	3,4
700	267	180	25x76 25x2	4,5
800	267	180	25x76 25x2	5,2
1000	267	180	25x76 25x2	7,4
1200	329	180	15x76 25x2	13,1